

# EDUCATION, HEALTH AND CARE PLANS

## What is an Education, Health and Care plan?

From September 2014 Education, Health and Care (EHC) plans will start to replace Statements of special educational needs and Learning Difficulty Assessments. EHC plans will focus on what a child or young person\* wants to achieve and what support is needed to do this.

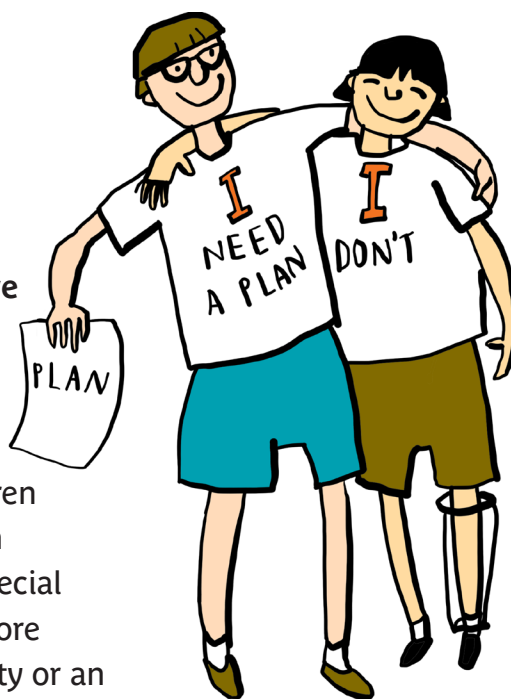
Having an EHC plan means the different agencies that provide your education, health and social care support will need to work more closely together to help you achieve your goals and make sure you are supported in the best way possible.

## Who will get an EHC plan?

**EHC plans will be for children and young people who have a special educational need or disability that cannot be met by support that is usually available in a school or college. EHC plans can continue until you are 25 but it will stop if you:**

- go to university
- get a job
- tell your local authority you no longer want your EHC plan, or
- the local authority thinks you no longer need it. For example, following a review, because you have achieved the educational goals written in the plan and no longer need additional special educational help.

Independent Supporters will be available to help children and young people and their families who are having an EHC assessment, or moving from their statement of special educational needs to an EHC plan. You can find out more about Independent Supporters from your local authority or an impartial information, advice and support service.

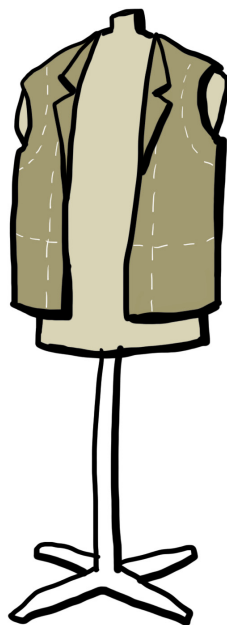


\* A child is a person under compulsory school age. A young person is a person over compulsory school age but under 25. A person is no longer of compulsory school age after the last day of summer term during the year in which they become 16.

## What will be included in an EHC plan?



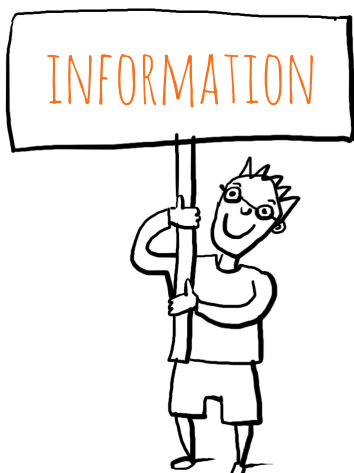
An EHC plan will be tailored to meet your particular needs so each child or young person's plan will look different. Your EHC plan will include information about you, how you like to communicate, what support you need and what you would like to achieve.



All the people who support you will be able to see the information in your plan. You will be able to share your views about what personal information is included in your plan and who should see this information.

You can find out more about the changes to your special educational needs or disability support by:

- talking to an impartial information, advice and support service. You can find contact information for one of these here:  
[www.parentpartnership.org.uk/find-your-pps/](http://www.parentpartnership.org.uk/find-your-pps/)
- talking to your family, teachers, tutors and support workers
- getting in touch with your local authority. You can find their contact information on the GOV.UK website: <https://www.gov.uk/find-your-local-council>



To help you understand the changes to the law we have created a video, leaflet and poster each for four main areas of your SEN and disability support.

**These four areas are:**

**Education, Health and Care plans**  
**The Local Offer**  
**Post-16 support**  
**Making decisions**

